

This manual is for reference and historical purposes, all rights reserved.

This page is copyright© by M. Butkus, NJ.

This page may not be sold or distributed without the expressed permission of the producer

I have no connection with any camera company

On-line camera manual library

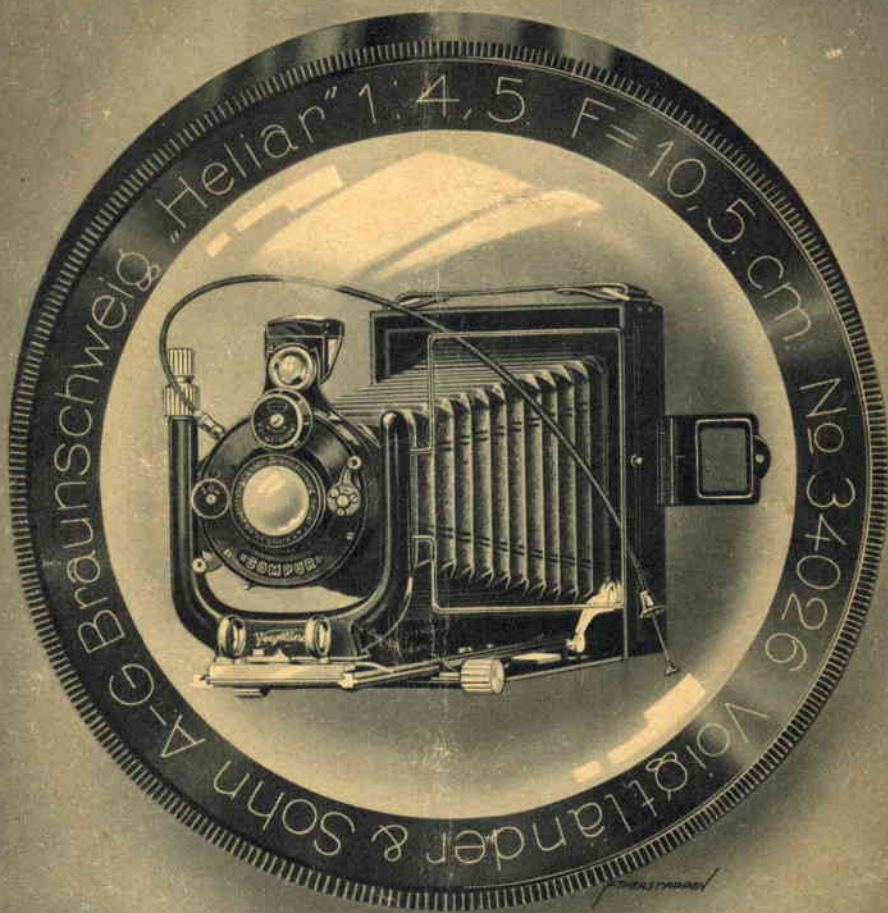
This is the full text and images from the manual. This may take 3 full minutes for the PDF file to download.

If you find this manual useful, how about a donation of \$3 to: M. Butkus, 29 Lake Ave., High Bridge, NJ 08829-1701 and send your e-mail address so I can thank you. Most other places would charge you \$7.50 for a electronic copy or \$18.00 for a hard to read Xerox copy.

This will allow me to continue to buy new manuals and pay their shipping costs.

It'll make you feel better, won't it?

**If you use Pay Pal or wish to use your credit card,
click on the secure site on my main page.**



Voigtlander

The Columbia Photo Supply Co.

1424 New York Avenue, N. W.

WASHINGTON, D. C.

www.orphancameras.com

INTRODUCTION

THE firm of Voigtlander & Sohn was founded in Vienna in 1756, and for over one hundred and sixty years has held one of the most prominent positions as Optical Instrument Manufacturers. By persistent endeavor and untiring effort during the last century and one half, they have constructed lenses of optical and mechanical perfection, and have progressed with the times by bringing out the latest models. By this high standard of excellence their objectives have become known throughout the entire civilized world, as being the most perfectly corrected lenses.

Our cameras enjoy, without question, the same reputation as our optical lenses. Their careful construction, ingenious design and practical features have always been admired by people who know camera values.

Our new models, the Vag, Avus, folding and the improved Tourist, and finally, the roll film cameras, have all been the sensation of the season, and are fully described herein. We know that this new line will be enthusiastically received by all amateurs.

The cameras are equipped with Heliar F/4,5, 3,5, as well as the new F/4,5 Skopar and the F/6,3 Voigtar. The two latter lenses are new additions to the Voigtlander line of optics.

Illustrations on the following page show our different types of lenses in actual size, and with a focal length of $5\frac{1}{4}''$. The cuts give a perfect idea of the luminosity of each type. We also show the exposure times corresponding to the luminosity of each type, taking as a basis one second with F/6,3 diaphragm for the sake of simplicity. Within the illustrations themselves is shown the diagram of the optical systems, indicating the construction of each type.





1 Second
Voigtar Lens F/6,3
 Triple anastigmat, 3 lenses



1 Second
Collinear Lens F/6,3
 Double Anastigmat of six Lenses with two triple cells



$\frac{3}{4}$ Seconds
Skopar Lens F/4,5
 Anastigmat of four Lenses with two double cells



$\frac{3}{4}$ Seconds
Heliar Lens F/4,5
 Anastigmat of five Lenses with two double cells

Heliar F/3,5



Anastigmat
 of five Lenses with two
 double cells

$\frac{1}{2}$ Second

Voigtlander Anastigmats reproduced in actual size

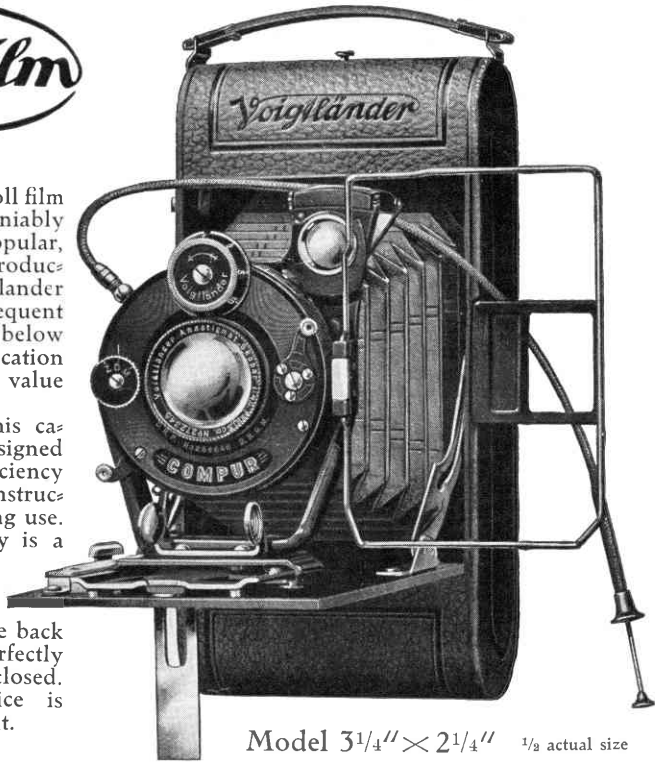
Speed F/6,3 ~ F/3,5 Focus 5 $\frac{1}{4}$ "



Of recent years roll film cameras have undeniably become the most popular, and so huge is the production of this Voigtlander model that the consequent low prices shown below give very little indication of the wonderful value offered.

Every part of this camera has been designed for maximum efficiency whilst the sturdy construction will ensure long use.

The winding key is a fixture (turning on only) and very much stronger than fitted to some makes. The back is hinged and perfectly light tight when closed. The loading device is simple and efficient.



Model $3\frac{1}{4}'' \times 2\frac{1}{4}''$ $\frac{1}{3}$ actual size

Specification:

Body: Hardened aluminium alloy.
 Finish: Neat black leather, metal parts nickel plated or black enamelled.
 Focusing: Radial device, distances in feet.

Viewfinders: Brilliant reversing finder, also wire direct vision with sighter at back.
 Bellows: Best quality black leather.
 Front: New design giving great rigidity.

Sizes:

	$3'' \times 2'' (5 \times 8 \text{ cm})$	$3\frac{1}{4}'' \times 2\frac{1}{4}'' (6 \times 9 \text{ cm})$	$4\frac{1}{4}'' \times 2\frac{1}{2}'' (6\frac{1}{2} \times 11 \text{ cm})$
Dimensions	$5\frac{1}{2} \times 2\frac{3}{4} \times 1\frac{1}{8} \text{ in.}$	$6\frac{3}{4} \times 3\frac{3}{8} \times 1\frac{3}{8} \text{ in.}$	$8 \times 3\frac{1}{2} \times 1\frac{1}{2} \text{ in.}$
Weight	12 $\frac{1}{2}$ ozs.	22 ozs.	24 ozs.
Focusing ..	3 ft. — inf.	4 ft. — inf.	4 (5) ft. — inf.

Prices:

Lenses	Shutters	$3'' \times 2''$	$3\frac{1}{4}'' \times 2\frac{1}{4}''$	$4\frac{1}{4}'' \times 2\frac{1}{2}''$
Voigtar F/6,3	Embezet	\$ 16,50	\$ 16,50	\$ 20,—
Voigtar F/6,3	Ibsor	—	\$ 19,50	\$ 22,—
Skopar F/4,5	Compur	\$ 27,—	\$ 27,—	\$ 33,—
Heliar F/4,5	Compur	\$ 35,—	\$ 35,—	\$ 42,50

Accessories:

Yellow-Filter 2 \times or 5 \times (see page 11) / Finder Magnifier (see page 11)



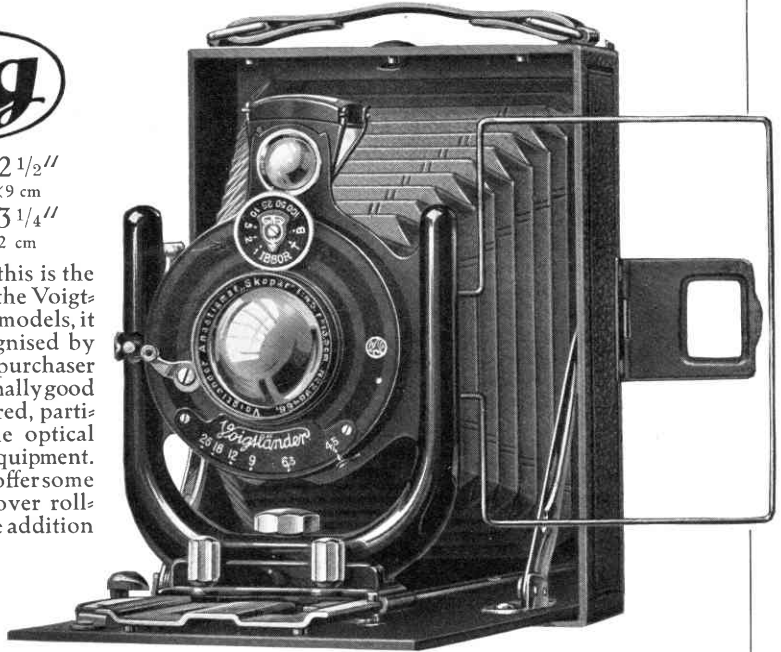
3 1/2" x 2 1/2"
and 6 1/2 x 9 cm
4 1/4" x 3 1/4"
and 9 x 12 cm

Although this is the cheapest of the Voigtlander Plate models, it will be recognised by the prudent purchaser that exceptionally good value is offered, particularly in the optical and shutter equipment.

Film packs offer some advantages over roll films, and the addition of a camera of this sort

in the 3 1/2" x 2 1/2" size to one's equipment might be advantageously considered.

In any case, if the intending purchaser seeks a light, inexpensive pocket camera, this model will entirely fulfil his requirements.



Model 4 1/4" x 3 1/4" 1/2 actual size

Specification:

Body: Aluminium alloy.
Finish: Neat black leather, metal parts black enamelled or nickel plated.
Focusing: Radial movement, distances in feet.
Extension: Single.

Front: New design with rising and cross movements.
Viewfinders: Brilliant revolving type and direct vision finder with sighter at back.
Bellows: Best quality black leather.
Accessories: 3 single Holders, 1 Film-pack Adapter and cable release.

Sizes:

	3 1/2" x 2 1/2" (6 1/2 x 9 cm)	4 1/4" x 3 1/4" (9 x 12 cm)
Dimensions	4 7/8 x 3 1/2 x 1 3/4 in.	6 x 4 3/8 x 2 in.
Weight	20 ozs.	32 ozs.
Focusing	4 ft. - inf.	4 ft. - inf.

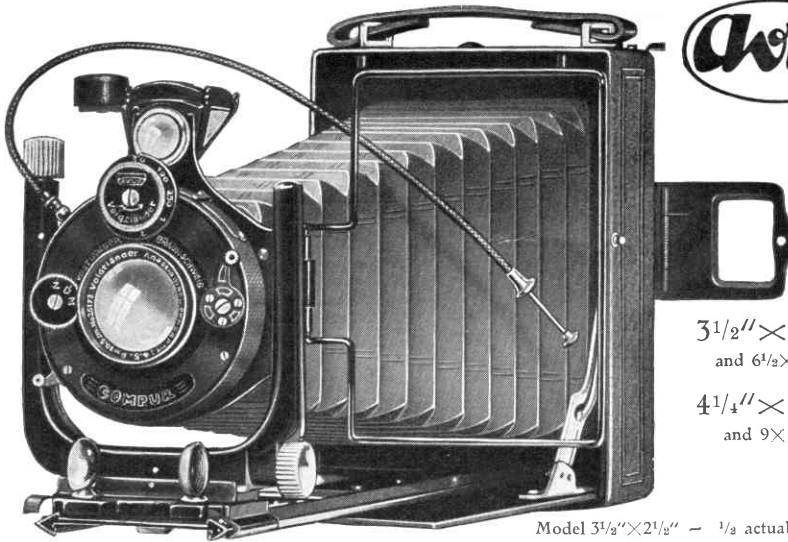
Prices:

	Lenses	Shutters	3 1/2" x 2 1/2"	4 1/4" x 3 1/4"
Voigtar F/6,3		Embezter	£ 16,50	£ 21,—
Voigtar F/6,3		Ibsor	£ 20,—	£ 22,—
Skopar F/4,5		Ibsor	£ 27,50	£ 30,—

Accessories see pages 10 and 11.

Voigtländer

Avus



3 1/2" x 2 1/2"
and 6 1/2 x 9 cm

4 1/4" x 3 1/4"
and 9 x 12 cm

Model 3 1/2" x 2 1/2" - 1/3 actual size

This camera appeals to the photographer who desires a double extension model but does not wish to purchase the *de luxe* instrument such as the "Tourist" (Bergheil). A careful comparison of this camera with others offered at or about the same price, will reveal the superiority of the Voigtländer Avus, whilst the lenses and shutters are excellent in every way.

Specification:

Body: Light aluminium alloy.
 Finish: Black morocco leather, metal parts black enamelled or nickel plated.
 Focusing: Rack and pinion movement with infinity catch.
 Extension: More than double.
 Front: New design "U"-front with rising and cross movements by rack and pinion.

Viewfinders: Brilliant revolving pattern with spirit-level attached, also wire direct vision finder with sighter at back.

Bellows: Best quality black leather.
 Accessories: 3 single metal plate holders, 1 Filmpack-Adapter and cable release.

Sizes:	3 1/2" x 2 1/2" (6 1/2 x 9 cm)	4 1/4" x 3 1/4" (9 x 12 cm)
Dimensions.....	4 7/8 x 3 1/2 x 2 in.	6 x 4 3/8 x 2 1/8 in.
Weight.....	22 1/2 ozs.	38 ozs.
Extension.....	8 7/8 in.	11 1/4 in.

Prices:

Lenses	Shutters	3 1/2" x 2 1/2"	4 1/4" x 3 1/4"
Voigtar F/6,3	Ibsor	£ 27,50	£ 30,—
Skopar F/4,5	Ibsor	£ 30,50	£ 35,—
Skopar F/4,5	Compur	£ 33,—	£ 39,—

Accessories see pages 10 and 11.

Voigtländer

Sizes:	$3\frac{1}{2}'' \times 2\frac{1}{2}''$	$4\frac{1}{4}'' \times 3\frac{1}{4}''$	10×15 cm
Dimensions.....	$5 \times 3\frac{3}{4} \times 2$ in.	$6 \times 4\frac{1}{2} \times 2\frac{1}{4}$ in.	$7\frac{1}{8} \times 5 \times 2\frac{3}{8}$ in.
Weight.....	28 ozs.	41 ozs.	52 ozs.
Extensions.....	10''	11''	14''

Prices:

Lenses	Shutters	$3\frac{1}{2}'' \times 2\frac{1}{2}''$	$4\frac{1}{4}'' \times 3\frac{1}{4}''$	10×15 cm
Collinear F/6,3..	Compur	\$ 50,—	\$ 65,—	\$ 75,—
Heliar F/4,5..	Compur	\$ 52,50	\$ 72,— (a)	\$ 87,50 (c)
			\$ 75,— (b)	\$ 90,— (d)
Heliar F/3,5..	Compur	\$ 72,—	—	—
Skopar F/4,5..	Compur	—	—	\$ 72,—

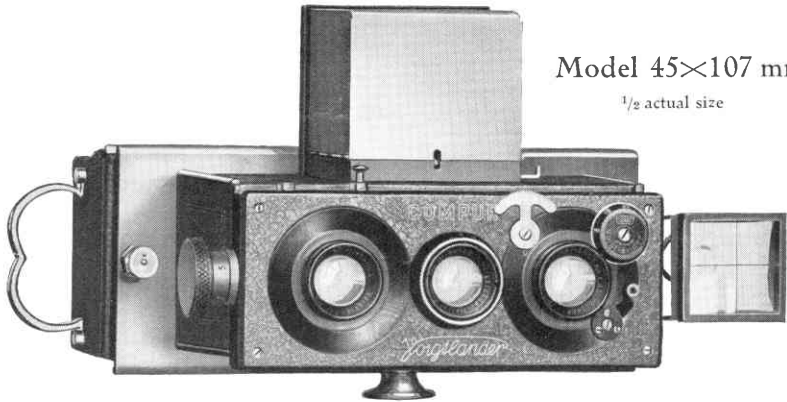
(a) $5\frac{1}{4}''$ focus, (b) $6''$ focus, (c) $6\frac{1}{2}''$ focus, (d) $7''$ focus

Accessories see pages 10 and 11.



Made with Heliar F/4,5

Stereoflectoscope



Model 45×107 mm

¹/₂ actual size

Stereo-Photography most certainly is the climax of all photography, as it gives us the real impression of nature *en relief*. Though quite interesting results may be obtained with simple stereo-cameras, there is nothing to beat the stereo-reflex-cameras, the finest of which is represented by the "Stereoflectoscope", which is made in two sizes, viz. 45×107 mm and 6×13 cm.

Specification:

Lences: 2 taking and 1 reflex Heliar F/4,5, 65 mm focus for 45×107 mm.
75 mm focus for 6×13 cm.

Shutter: Reliable Compur shutter (Speed up to ¹/₂₅₀ sec.).

Body: All metal, leather covered.

Finish: Metal parts black enamelled, fittings nickel plated.

Focusing: Rack and pinion wheel movement with engraved scale.

Extension: Single, focusing from 5 (4) feet to infinity.

Viewfinders: Special reflex focusing screen with sunk spirit level. For work at eye-level the 45×107 mm model is fitted with a collapsible direct vision finder and the larger model with a folding wire frame finder on top.

Changing box: All metal for twelve ordinary or 8 colour plates with plate number indicator.

Sices:

	45×107 mm	6×13 cm
Dimensions (with changing box).....	5 ⁷ / ₈ ×2 ³ / ₈ ×4 ¹ / ₈ in.	7×4 ³ / ₄ ×3 ¹ / ₂ in.
Weight (with changing box).....	35 ozs.	58 ozs.
Focusing	5 ft. — inf.	4 ft. — inf.

Prices:

	45×107 mm	6×13 cm
Stereoflectoscope with changing box, complete, in fine brown leather case with shoulder strap.....	£ 115,—	£ 135,—

Accessories:

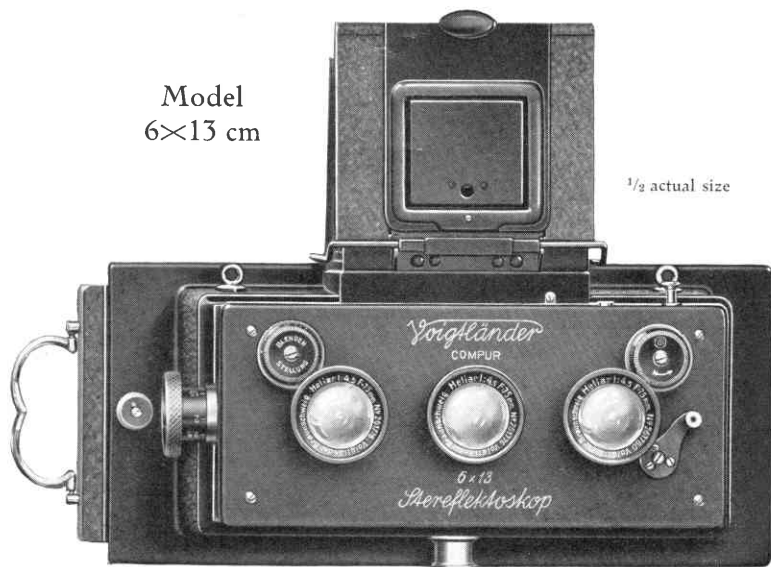
Prices: \$

	45×107 mm	6×13 cm
Single black metal holders*	—,75	—,85
German silver ditto*	1,85	2,75
Film-pack adapter*	3,50	4,—
Adapter for single metal holders or film-pack adapter*	4,—	5,—
Extra changing box with 12 sheaths	35,—	45,—
Ditto with 8 sheaths for colour plates	35,—	45,—
Pair of yellow filters (matched). (2 times or 5 times)	9,—	10,—
Stereoscopic printing frame	4,50	5,—
Stereoscope (opera-glass pattern) for transparencies	10,—	—
Mahogany Stereoscope for prints and transparencies	—	13,—
Magnifier (5×) to fit over reflex hood	6,—	—
Supplementary lenses (set of 3 matched lenses)	7,50	—

* For single metal holders or a film-pack adapter a special adapter is necessary.

Model
6×13 cm

1/2 actual size



Accessories :

Prices : \$

	3 1/8" x 2 1/8"	4 1/4" x 3 1/4"	10 x 15 cm
Extra single metal holders.....	—,75	—,90	1,—
Metal Filmpack Adapter	2,75	3,—	3,50
Finder Magnifier	1,50	1,50	1,50
Magnirectifier	4,50	4,50	4,50
Yellow-Filter (2x or 5x)			
for Voigtar F/6,3.....	4,50	4,50	4,75
for Skopar F/4,5.....	4,50	4,50	5,—
for Collinear F/6,3.....	4,50	4,50	5,—
for Heliar F/4,5.....	4,50	4,50	5,—
for Heliar F/4,5 (6" focus).....	—	5,—	—
for Heliar F/4,5 (7 1/8" focus).....	—	—	6,—
for Heliar F/3,5.....	5,—	—	—
Focar-Lens (Magnifying lenses)			
for Voigtar F/6,3.....	3,50	4,—	—
for Skopar F/4,5.....	3,50	4,—	5,—
for Collinear F/6,3.....	3,50	4,—	5,—
for Heliar F/4,5.....	4,—	4,—	5,—
for Heliar F/4,5 (6" focus).....	—	5,—	—
for Heliar F/3,5.....	4,—	—	—
Focar-Lens (Wide-angle lenses)			
for Skopar F/4,5.....	3,50	4,—	5,—
for Collinear F/6,3.....	3,50	4,—	5,—
for Heliar F/4,5.....	3,50	4,—	5,—
for Heliar F/4,5 (6" focus).....	—	5,—	—
for Heliar F/4,5 (7 1/8" focus).....	—	—	5,—
Tele-Dynar F/6,3 Lens			
Focus	Fitting shutter of		
8"	Voigtar F/6,3, Collinear F/6,3, Skopar F/4,5 and Heliar F/4,5 (4 1/8" focus).....		
10"	32,50	—	—
10"	Heliar F/3,5 (4 1/8" focus).....		
10"	37,50	—	—
10"	Skopar F/4,5 and Heliar F/4,5 (5 1/4" focus).....		
11 1/2"	—	42,50	—
12 3/4"	Heliar F/4,5 (6" focus)		
12 3/4"	—	45,—	—
12 3/4"	Heliar F/4,5 (6 1/2" and 7 1/8" focus) and Skopar F/4,5 (6 1/2" focus).....		
12 3/4"	—	—	50,—

Descripton:

The Voigtlander 4× Finder-Magnifier

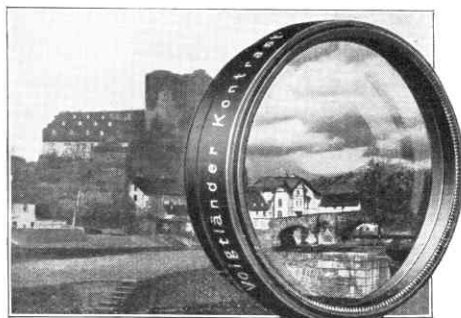
The brilliant viewfinders fitted to pocket cameras are necessarily small, and not always easy to use. With this useful attachment, however, which fits over the brilliant finder, magnifies the image reflected and also shades it, one will find the brilliant viewfinder greatly improved.

When ordering please state size of top plate of viewfinder.

Price:



The Voigtlander Yellow Filter



If you like clouds in your pictures and a faithful rendering of the delicate tints of nature you should use orthochromatic plates (or films) with a Voigtlander Yellow filter (orthochromatic screen). They are made in two densities covering the whole range of amateur work.

2× (marked Alpha) requiring an increase of 2 times in exposure and suitable for instantaneous photography in bright light, and

5× (marked Beta) requiring an increased exposure of 5 times.

The former is recommended for general use and partial correction, whilst the latter is needed for subjects such as copying paintings, flower studies, cloud-pictures, snow and seascapes etc.

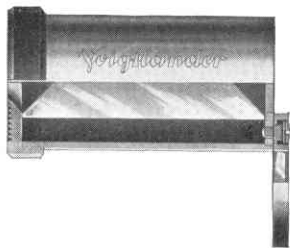
For prices see page 10.

The Voigtlander Magnirectifier

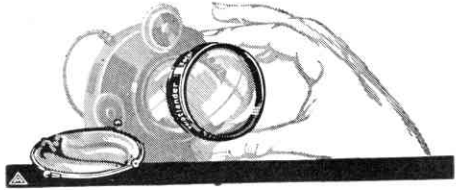
By the puzzling fact that the image on the ground glass appears upside down the composing of a picture becomes somewhat difficult. Moreover critical focusing is not quite easy by the naked eye. Here the Voigtlander Magnirectifier with its double purpose comes in quite handy. This useful little instrument, a combination of magnifier and prism enables the image of the ground glass to be observed in the natural upright position either in actual size or about 4 times magnified.

Price:

(suits all makes of plate cameras).



**Voigtlander
Focar-Lenses**



Focar-Lenses are supplementary lenses which are supplied in neat little leather purses. By simply slipping them on the lens hood quite a range of different-sized images are possible with the original lens from the same standpoint.

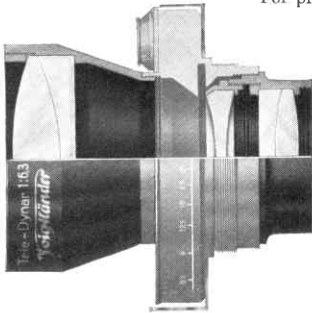
Voigtlander Focar-Lenses are made in twenty different foci for various sizes and two different grades: wide-angle lenses giving a greater field of view and magnifying lenses with improved perspective.

Space not permitting a full table of all possible combinations the table for the $4\frac{1}{8}$ " focus Heliar F/4,5 is given as an example underneath.

Focar-Lens	Increasing focal length from $4\frac{1}{8}$ " to	Enlarging image	Increasing exposure by
No. 2	$5\frac{1}{4}$ "	1,3 times	$1\frac{1}{2}$ times
No. 4	6"	1,5 times	$2\frac{1}{4}$ times
No. 3	7"	1,7 times	3 times

Focar-Lens (wide-angle)	Reducing focal length from $4\frac{1}{8}$ " to	Enlarging field of view	Reducing exposure by
No. 30	$3\frac{1}{2}$ "	1,2 times	$\frac{3}{4}$ times

For prices of Focar-Lenses, see page 10.



Telephoto-Snapshots in reach of all
Hand Camera Users

**The
"Tele-Dynar"**

F/6,3

The patent "Tele-Dynar" is a fixed telephoto lens, constructed on entirely new principles which combines successfully short bellows extension with long focal length at an aperture as large as F/6,3.

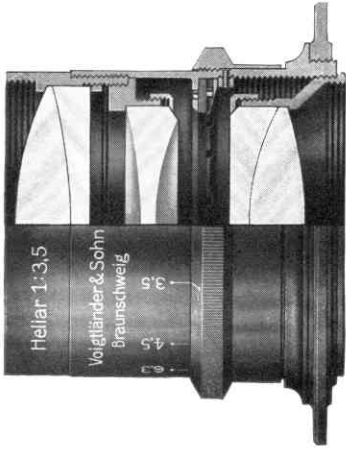
The new patent "Tele-Dynar" — quite different from ordinary telephoto lenses — gives an uniform flat field, critical definition right up to the corners and as brilliant an image as any other high-class Anastigmat.

The "Tele-Dynar" is supplied in 5 different sizes to fit all our cameras. After unscrewing the front and back of the ordinary anastigmat of our cameras, the 2 components of the "Tele-Dynar" mounted in cells fit the respective shutters. The two "Tele-Dynar" components are supplied in solid leather case without shutter.

For prices see page 10.

“ Heliar ”

F/3,5 — Angle 50°



The Ultra-High Speed Anastigmat. Particularly adapted for cinematograph and focal plane shutter work. Extreme speed and sharp definition at full aperture, right up to the corners of the plate are the chief features of this remarkable lens.

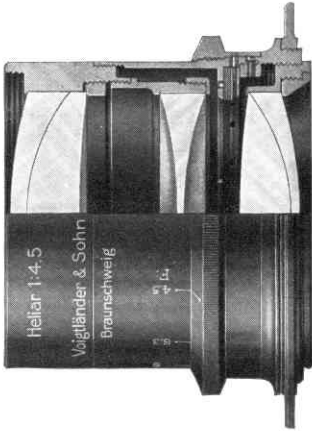
Where a lens of the highest speed is desired, we would recommend this F/3,5 Heliar.

No.	Equivalent Focus "	Size of plate covered at full aperture	Price in barrel \$
0	1 ⁵ / ₈	1 × ³ / ₄	29,—
1	2	1 × ³ / ₄	30,—
2	3	1 ³ / ₄ × 2 ³ / ₈	32,—
3	4 ¹ / ₈	3 ¹ / ₂ × 2 ¹ / ₂	38,—
4	6	3 ³ / ₈ × 4 ³ / ₈	60,—
5	6 ¹ / ₂	3 ¹ / ₂ × 4 ³ / ₄ *	70,—
6	7 ¹ / ₈	3 ¹ / ₂ × 5 ¹ / ₂	77,50
7	8 ¹ / ₄	4 × 6 *	82,50
8	9 ¹ / ₂	4 ³ / ₄ × 6 ¹ / ₄	125,—
9	12	6 ¹ / ₄ × 8 ¹ / ₄	180,—

* in counter-sunk mount

“Heliar”

F/4,5 — Angle 58° up to 9½” — 45° from 9½” up



The Heliar is universally recognized as the highest type of ultrarapid Anastigmat. Its wonderful qualities place it in a class by itself. In addition to its great speed it possesses optical corrections of the highest order, absolutely eliminating spherical and chromatic aberrations, flare, coma, and other optical defects usually found in lenses not properly corrected.

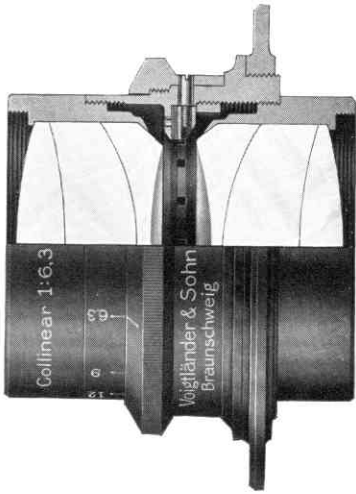
For artistic portraiture and studio photography the Heliar is unrivaled, as it possesses in the highest degree the qualities which are essential, such as its speed, flatness of field, critical definition, and required covering power.

We also recommend the Heliar lens for use on reflecting and other focal plane cameras, where its extreme rapidity enables the user to take full advantage of the high speed shutter.

No.	Equivalent Focus "	Size of plate covered at F/4,5	Price in Barrel ₹	In Focusing Mount ₹
1	5 ¼	3½ × 4¾	40,—	45,—
2	6	3½ × 5½	42,50	47,50
2A	6 ½	4 × 6	45,—	
3	7 ⅞	4¾ × 6¼	48,—	
3A	8 ¼	5⅞ × 7⅞	65,—	
4	9 ½	5⅞ × 8¼	90,—	
5	12	6¼ × 8¼	130,—	
6	14 ¼	7 × 9½	170,—	
7	16 ½	8¼ × 10½	225,—	
8	19	10¼ × 12¼	265,—	
9	24	12 × 16	550,—	

“Collinear”

Series 3, F/6,3 — Angle 70°—80°



The Collinear Series 3 is the most perfect lens for all around work possible to construct, and is highly recommended where one lens is desired for all branches of photography. It possesses those qualities which are essential in a universal objective, such as, extreme covering power, critical sharp definition and adaptability to wide angle work at somewhat reduced apertures.

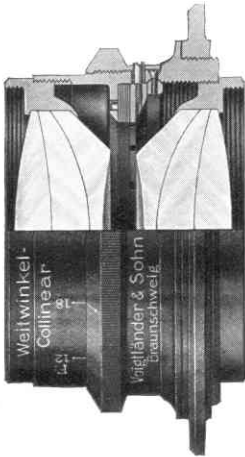
It is of symmetrical construction, either combination can be used alone as a complete objective of double the focal length of the complete lens. The speed of a single combination is F/12,5 at which aperture it possesses excellent definition and covering power.

It is being used successfully for landscapes, interiors, architectural and mechanical subjects, flashlights, and copying, and enlarging.

No.	Equivalent Focus "	Size of plate covered at F/6.3	Price in barrel \$	In Compur Shutter \$
2 A	5 1/4	4 × 5 1/8	35,—	45,—
3	6	4 3/4 × 6	38,—	52,50
3 S	6 1/2	4 3/4 × 6 1/2	40,—	55,—
3 A	7 1/8	5 1/8 × 7 1/8	48,—	60,—
4	8	6 × 8	60,—	75,—
5	10	7 × 9 1/2	85,—	105,—
6	12	9 1/2 × 11 3/4	100,—	127,50
7	14 1/2	10 5/8 × 13 3/4	125,—	

Wide angle Collinear

Series 4, F/12,5 — Angle 80°–100°



The Series 4 Collinear is designed for rapid wide angle work. Its large aperture F/12,5 permits the making of instantaneous exposures under favorable light conditions, and gives sufficient illumination to enable the operator to focus accurately in dimly lighted interiors.

It is constructed identically as the Series 3, being a cemented doublet of the symmetrical type which accounts for its excellent covering power, sharpness of definition, and flat field.

This lens is especially recommended when a rapid wide angle lens is desired for interior and flashlight work, architecture, copying, process work, etc.

No.	Equivalent Focus "	Size of plate covered at F/12,5	Size of plate covered with medium stop	Price \$
1	4 1/8	3 1/2 × 4 3/4	4 3/4 × 6	30,—
2	4 3/4	4 3/4 × 6 1/4	6 × 8	32,—
3	6	5 1/8 × 7 1/8	8 1/4 × 10 1/4	36,—
4	7 1/8	7 1/8 × 9 1/2	9 1/2 × 11 3/4	38,—
5	8	8 1/4 × 10 1/4	10 1/4 × 12 1/4	40,—
6	10	9 1/2 × 11 3/4	12 × 16	50,—

"Heliar"

f/3,5
f/4,5



Zeiss Jena